

KeV Thov Tso Npe Ua Tus Neeg Pov Npav Hauv Wisconsin

Thov sau kom nyeeem tau yooj yim
Muaj lwm cov lus qhia ntxiv nyob phab
ntawv sab nraud

Thov muab koj daim ntawv foos sau tiav xa
rov qab mus koj tus kws tuav ntaub ntawv
hauv lub tuam ceeb nroog

Cov txuj ci tsim nyog thov kos rau txhua kem plaub fab yog KOJ :	1	Yog koj tsis tuaj yeem kos rau txhua kem plaub fab tau, TSIS TXHOB sau daim ntawv foos no kom tiav <input type="checkbox"/> Yog ib tug neeg pej xeeem Neeg Meskas <input type="checkbox"/> Yuav tsum muaj hnuv nyooq tsawg kawg yog 18 xyoo los sis ua ntej Hnuv Xaiv Tsa <input type="checkbox"/> Muaj chaw nyob rau ntawm qhov chaw uas tau muab qhia rau hauv qab no ntev ua ke tsawg kawg yog 28 hnuv ua ntej xaiv tsa thiab tam sim no tsis muaj kev npaj yuav tsiv tawm <input type="checkbox"/> Tam sim no tsis raug rau ib lub txim xws li nram no raug ntes, tso tawm los ua ntej txog caij tso, tso ntawm los ib ntus, los sis raug rau lub sijhawm ntxiv raug ceev tseg vim ua txhaum txoj cai lij choj
---	---	--

Koj Lub Npe vim nws tshwm sim rau ntawm koj cov ntaub ntawv pov thawj chaw nyob	2	Lub Xeeem _____ Npe Ntxiv Tom Qab (Jr., II, thiab lwm yam.) _____ Lub Npe _____ Npe Nruab Nrab _____
---	---	---

Ntsig Txog Koj nab npawb xov tooj thiab email yog xaiv tau	3	Hnuv Yug (HLI/HNUB/XYOO) _____ / _____ / _____	Nab Npawb Xov Tooj (_____) Qhov Chaw Nyob Email _____
--	---	---	--

Qhov Chaw Nyob Koj Nyob Qhov Twg koj thaj chaw nyob xaiv tsa, tsis yog P.O.Box Yog koj tsis muaj qhov chaw nyob uas muaj txoj kev, thov siv daim duab qhia chaw nyob sab tom qab ntawm daim ntawv foos no	4	Chaw Nyob Txoj Kev _____ Apt/Chav # _____ Nroog Loj/Nroog Me/Lub Zos _____ WI _____ Zip _____ Chaw Xa Ntawv (yog sib txawv) _____ Koj puas yog tus neeg pov npav uas yog ua tub rog los sis muaj chaw nyob txawv teb chaws? <input type="checkbox"/> Ua Tub Rog <input type="checkbox"/> Qhov Chaw Nyob Ruaj Kho Rau Txawv Teb Chaws
---	---	---

Koj Qhov Chaw Nyob Xa Ntawv yog sib txawv dua saum toj saud	5	Chaw Nyob Txoj Kev (los sis P.O.Box) _____ Nroog Loj/Xeev/Zos/Zip _____
---	---	--

Cov Ntaub Ntawv Tso Npe Xub Thawj sau phaj no kom tiav yog koj tsuas kho koj qhov tso npe dua tshiab vim muaj tej yam pauv hloov xws li lub npe los sis chaw nyob	6	Lub Npe thiab Lub Xeeem ntawm Qhov Tso Npe Yav Dhau Los _____ Qhov Chaw Nyob ntawm Qhov Tso Npe Yav Dhau Los (yog paub) _____
---	---	--

KeV Txheeb Xyuas Yam Ua Pov Thawj (kos rau kem plaub fab uas phim koj) Yuav tsum Daim Ntawv Tso Cai Tsav Tsheb Hauv WI los sis tus nab npawb ID yog tsis tau tag sijhawm thiab tseem siv tau. Yuav tsum muaj SSN yog siv tsis tau DL/ID lawm los sis yeej tsis tau ua dua li	7	<input type="checkbox"/> Kuv muaj Daim Ntawv Tso Cai Tsav Tsheb hauv WI uas tseem tsis tau tag sijhawm thiab tseem siv tau los sis WI DOT tau tsim daim ID. Qhia tus nab npawb thiab hnuv tag sijhawm rau hauv qab no _____ - _____ - _____ Hnuv Tag Sijhawm _____ / _____ / _____ <input type="checkbox"/> Kuv tsis muaj Daim Ntawv Tso Cai Tsav Tsheb hauv WI uas tseem tsis tau tag sijhawm thiab tseem siv tau los sis WI DOT tau tsim daim ID. Tsuas qhia plaub tus zauv ntawm koj Tus Nab Npawb Social Security XXX-XX- _____ - _____ - _____ <input type="checkbox"/> Yog kuv yeej tsis tau muaj ib Daim Ntawv Tso Cai Tsav Tsheb hauv WI/ID los yog Tus Nab Npawb Social Security (saib cov ntaub ntawv thiab cov khauj ruam ua mus ntxiv tom ntev rau phab ntawv tom qab no)
---	---	--

Ntawv Pov Thawj Chaw Nyob cov neeg pov npav uas ua tub rog thiab nyob txawv teb chaws tsis tas yuav muab qhov chaw nyob ua pov thawj qhia	8	<input type="checkbox"/> Cov neeg pov npav yuav tsum muaj ib daim ntawv pov thawj chaw nyob thaum tso npe mus pov npav. Thov kos rau kem plaub fab no mus lees tias koj yeej muab ib daim ntawv theej ntawm daim ntawv ua pov thawj chaw nyob tso nroog daim ntawv thov no lawm Yam ua piv txwv muaj xws li: ib daim ntawv theej ntawm Daim Ntawv Tso Cai Tsav Tsheb hauv WI los sis Daim Npav ID, ib daim ntawv nqi, ib daim tw nyiaj tshev/daim tw them nqi, los sis ib tsab ntawv teb tuaj ntawm tsoom fww ib lub chaw ua haujlwm (saib sab tom qab ntawm daim ntawv thov yog xav paub ntxiv txog yam ua piv txwv)
--	---	--

Kos Npe thiab Kev Lees	9	Kev kos npe rau hauv qab no, Kuv lees tias kuv yeej qhia txhua yam raws li qhov muaj tseeb uas kuv paub lawm, Kuv yog tus tsim nyog ua tus neeg xaiv tsa , muaj chaw nyob rau qhov chaw nyob saum toj saud tsawg kawg yog 28 hnuv ua ke kiag thaum ua kev qhov xaiv tsa no, kuv yeej tsis muaj kev npaj yuav tsiv tawm mus, thiab kuv yeej tsis tau pov npav dua rau qhov kev xaiv tsa no. Kuv kuj lees tias kuv yuav tsis tsim nyog yuav raug txiav tawm tsis pub pov npav thiab txhua cov nqe lus nyob rau ntawm daim ntawv foos no yeej muaj tseeb thiab raug lawm. Yog kuv muab cov ntaub ntawv cuav qhia, tej zaum kuv yuav raug nplua los sis raug rau lub txim raws li cov cai lij choj ntawm Lub Xeev thiab Tsoom Fww X _____ / _____ / _____ Tus Neeg Pov Npav Kos Npe _____ Hnuv No Yog Hnuv _____
-------------------------------	---	---

KeV sau cov ntaub ntawv cuav rau ntawm no yeej raug rau lub txim raws li txoj cai lij choj hauv Wisconsin raws li Hom kuv ua txhaum cai lij choj

Tus Kws Pab Lis Haujlwm yog ib tug neeg pab koj kos npe rau daim ntawv foos no, lawv yuav tsum sau tshooj ntawv no kom tiav	10	X _____ Tus Kws Lis Haujlwm Kos Npe _____ Tus Kws Lis Haujlwm Chaw Nyob _____
---	----	--

Tshooj No tsuas yog rau Tus Neeg Ua Haujlwm Siv Xwb

Hom Ntawv Pov Thawj Chaw Nyob	WI DL	WI ID	UTIL	BANK/CC	PYCK	STDNT ID	GOV DOC	LSE	GOV ID	EMPL ID	RES CARE	TAX	HMLSS
Ntawv Pov Thawj Chaw Nyob Rau Ntawm Ib Lub Chaw Nyob													
					Ntawv Pov Thawj Chaw Nyob #			Hnuv Sau Tiav/POR Raug Txais					Hnuv Xaiv Tsa Tus Nab Npawb Pov Npav
								/	/				

WisVote ID # _____ Tus ID Ntawm Tus Neeg Raug Xaiv # _____ <input type="checkbox"/> Raug Xa raws Chaw Xa Ntawv	X _____ Tus Neeg Ua Haujlwm Kos Npe
--	--

Chaw Ua Haujlwm Hauv Ib Cheeb Tsam	Sch.Ib Cheeb Tsam	Lub Chaw Tswj Xyuas Txoj Cai	Cty.Supr.	Ct.Of.App.	Xab Pha	St. Senate	Tsoom Fwv Nom Tswv
------------------------------------	-------------------	------------------------------	-----------	------------	---------	------------	--------------------

1 • Yog koj tsis kos rau **txhua** kem plaub fab hauv tshooj ntawv no, koj yeej **tsis** tsim nyog muaj cai pov npav rau hauv Wisconsin. **Tsis txhob sau daim ntawv no kom tiav.**

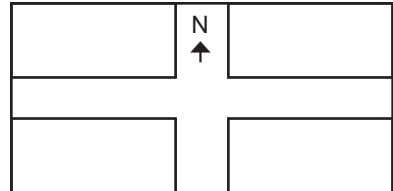
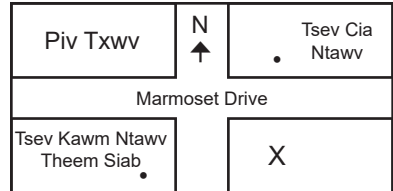
2 • Qhia koj lub npe tam sim no kom txhij txhua. Thov qhia koj lub npe raws li qhov tshwm sim rau ntawm koj daim ntawv tso cai tshav tsheb hauv WI los sis lub xeev uas tsim daim npav ID (Kem plaub fab), yog ua tau, thiab ntawv pov thawj chaw nyob uas koj yuav tau muab raws li qhia rau Kem Plaub Fab 8.

3 • Qhia koj lub hlis yug, hnuv yug thiab xyoo yug.
• Kev qhia koj tus nab npawb xov tooj thiab/los sis chaw nyob email yog xaiv tau thiab nce raws li kev thov cov ntaub ntawv teev tseg. Tej zaum cov ntaub ntawv no yuav raug siv los ntawm koj tus neeg tuav ntaub ntawv hauv lub nroog uas tau hu rau koj txog koj daim ntawv teev tseg ntawm tus neeg pov npav los sis kev thov daim ntawv xaiv tsa.

4 • Qhia koj qhov chaw nyob (lub chaw muaj cai pov npav) hauv Wisconsin.
• Qhia lub npe txoj kev ntawm koj qhov chaw nyob, suav nrog hom ntaub ntawv (St, Ave, thiab lwm yam) thiab lwm cov ntaub ntawv qhia ua ntej thiab/los sis qhia tom qab txog feem chaw nyob (N, S thiab lwm yam).
• Koj yuav tsis tuaj yeem ntaus PO Box ua ib qho chaw nyob ruaj khov. Kem plaub fab hais txog ib txoj kev tsheb me nyob deb nroog uas tsis muaj tus nab npawb txoj kev yuav siv tsis tau.
• Ib "tus neeg xaiv uas yog tub rog" yog ib tug neeg, los sis tus txij nkawm los sis tus neeg nce raws ntawm ib tug neeg uas yog ib tug tswv cuab ntawm ib pawg ua haujlwm los sis ib tug neeg ua lag luam ntsig txog dej hia txwv, ib tug neeg ua haujlwm uas ua haujlwm rau ib pawg ua haujlwm thiab ua haujlwm rau sab nrauv Teb Chaws Meskas, los sis yog ib tug kws ua haujlwm pab dawb txog feem Tub Rog Saib Xyuas Kev Thaj Yeeb. Cov neeg xaiv uas yog tub rog tsis tas yuav tso npe thiaj li muaj cai pov npav rau ntawm ib qho kev xaiv tsa.
• Ib "tug neeg xaiv uas muaj chaw nyob ruaj khov rau txawv teb chaws" yog ib tug neeg pej xeeb Neeg Meskas, muaj hnuv nyoog tsawg kawg 18 xyoo, yog tug neeg uas tsis tsim nyog yog ib tug neeg nyob rau ntawm lub xeev no, tab sis nws yog tus neeg uas tau nyob ntev rau hauv lub xeev no, los sis yog tug neeg uas nws niam thiab txiv tau nyob rau hauv lub xeev no ua ntej nws niam thiab txiv tsiv tawm hauv Teb Chaws Meskas mus, thiab tus neeg uas tsis tau tso npe pov npav rau lwm lub xeev.

Yog koj tsis muaj tus nab npawb txoj kev los sis chaw nyob, thov siv daim ntawv qhia chaw no qhia seb koj nyob rau thaj chaw twg.

Yog koj yog ib tug neeg pov npav tsis muaj tsev nyob thiab tab tom tso npe pov npav, thov kom lub chaw ua haujlwm uas muab kev saib xyuas rau cov neeg tsis muaj tsev nyob tias sau ib tsab ntawv qhia tias:
• Sau cov npe ntawm koj cov neeg
• Piv qhia txog thaj chaw uas koj xaiv yuav mus pov npav



5 • Yog koj qhov chaw nyob xa ntawv sib txawv ntawm koj lub tsev nyob, qhia rau ntawm no. Qhov PO Box yeej kam lees ib yam nkaus li qhov chaw nyob xa ntawv. Cov neeg xaiv tsa uas nyob txawv teb chaws yuav tsum muab lawv qhov chaw nyob txawv teb chaws qhia rau ntawm no.

6 • Qhia lub npe thiab lub xeev yog tau pauv hloov thiab/los sis qhov chaw nyob dhau los yog koj tau tso npe pov npav rau ib qho chaw nyob hauv Teb Chaws Meskas.

7 • Yog koj muaj ib daim ntawv tso cai tsav tsheb hauv WI los sis WI DOT ID uas tseem siv tau thiab tsis tau tag sijhawm: qhia rau nab npawb ntawv. Yog koj tsis paub koj tus nab npawb, thov hu rau (608) 266-2353 thiaj li tau nws.
• Yog koj muaj ib daim npav tso cai tsav tsheb hauv WI los sis WI DOT ID uas tag sijhawm lawm, raug thim tawm lawm, raug muab tshem tawm, los sis raug tsis kam, muab rau koj: koj **yuav tsum** qhia plaub tug zauv kawg ntawm koj tus nab npawb Social Security. Ntxiv qhov no, koj kuj yuav tau qhia tus nab npawb nyob ntawm koj daim ntawv tso cai tsav tsheb los sis ID (xaiv tau).
• Yog koj yeej tsis tau muaj ib daim npav tso cai tsav tsheb hauv WI los sis WI DOT ID hlo li: koj yuav tsum qhia plaub tug zauv kawg ntawm koj tus nab npawb Social Security.
• Yog koj tsis tau muaj ib daim npav tso cai tsav tsheb hauv WI los sis WI DOT ID los sis tsis muaj Tus Nab Npawb Social Security: thov kos rau kem plaub fab uas tsim nyog ntawd.

Yog koj tab tom tso npe pov npav rau Hnuv Xaiv Tsa thiab koj yeej tau ib daim ntawv tso cai tsav tsheb hauv WI los sis daim ID lawm, tab sis tsis tuaj yeem los sis tsis yeem qhia tau tus nab npawb, koj qhov pov npav yuav tsis raug muab suav, tshwj tsis yog koj qhia tus nab npawb rau cov kws kuaj xyuas kev xaiv tsa kom tsis pub dhau thaum 8:00 teev tsaus ntuj rau Hnuv Xaiv Tsa los sis qhia rau koj tus kws tuav ntaub ntawv hauv lub nroog kom tsis pub dhau 4:00 teev tsaus ntuj rau hnuv Friday tom qab Hnuv Xaiv Tsa.

Txhua cov ntaub ntawv ua pov thawj txog chaw nyob yuav tsum muaj tus neeg pov npav lub npe thiab qhov chaw nyob tam sim no.

- Daim Ntawv Tso Cai Tsav Tsheb hauv WI/Daim Npav ID, yog tsis tau tag sijhawm los sis tsis tau raug thim; tej zaum tseem siv tau yog raug thim tsis pub tsav tsheb lawm
- Lwm daim npav ua pov thawj los sis ntawv tso cai uas raug muab los ntawm tsoom fww Wisconsin
- Ib daim npav ID neeg ua haujlwm uas muaj duab nrog, tab sis tsis yog ib daim npav ua lag luam
- Ib daim ntawv them se nqi vaj tsev los sis ib daim ntawv them nqi rau lub xyoo tam sim no los sis lub xyoo yuav npaj xaiv tsa
- Ib daim ntawv xauj tsev nyob (tsis suav ua daim ntawv pov thawj chaw nyob yog tus neeg xaiv xa daim ntawv foos raws chaw xa ntawv)
- Ib daim npav ID muaj duab lo los ntawm ib lub tsev kawm ntawv qeb siab, tsev kawm ntawv them sib los sis tsev kawm ua haujlwm nrog rau ib daim ntawv them nqi los sis sau cov tsev nyob hauv lub chaw kawm ntawv uas raug muab rau nyob los ntawm lub tsev kawm ntawv qeb siab, tsev kawm ntawv them sib los sis tsev kawm ua haujlwm
- Ib daim ntawv them nqi dej los yog hluav taws xob rau thaum lub sijhawm piv xaiv tsa tab tsis yuav tsis ua ntej 90 hnuv ua ntej hnuv tso npe
- (Rau cov neeg pov npav tsis muaj tsev nyob xwb) Ib tsab ntawv tuaj ntawm ib lub chaw uas muab kev saib xyuas rau cov neeg tsis muaj tsev nyob tias yog tus neeg pov npav thiab piav qhia txog thaj chaw nyob ntawm tus neeg no xav mus pov npav
- Ib daim ntawv cog lus/ntaub ntawv sib koom tes uas raug npaj ua los ntawm ib lub chaw muab kev saib xyuas chaw nyob uas qhia txog tus neeg nyob hauv lub chaw no
- Ib daim ntawv hauv tuam txhab nyiaj/ib daim ntawv credit
- Ib daim twv nyiaj tshev los sis daim twv them nyiaj
- Ib daim nyiaj tshev los sis lwm cov ntaub ntawv uas raug muab los ntawm tsoom fww

Cov ntaub ntawv ua pov thawj chaw nyob tej zaum yuav raug muab xa raws electronic.

10 **Tus Kws Pab Lis Haujlwm:** Yog koj tsis tuaj yeem kos npe rau daim ntawv foos no vim lub cev tsis tsaus, koj tuaj yeem nrhiav ib tug neeg pab los kos npe tam rau koj tus kheej. Tus neeg pab lis haujlwm no yuav tsum kos nws lub npe thiab qhia qhov chaw nyob rau kem ntawv seem no. Kev kos npe, tus neeg pab lis haujlwm lees tias nws tau kos npe rau daim ntawv foos no tam rau koj tus kheej lawm.

Koj puas xav tau kev pab yooj yim rau ntawm lub chaw mus xaiv tsa (xws li kev pov npav raws ntawm tej ntug kev)? Yog xav tau, thov piav qhia:

Thov qhia seb yog koj txaus siab kam mus ua ib tug neeg pab saib xyuas rau ntawm ib lub chaw xaiv tsa